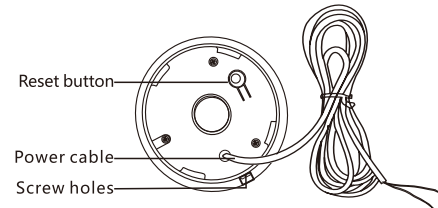
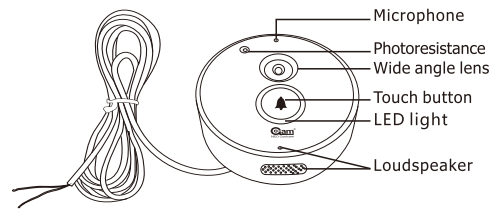
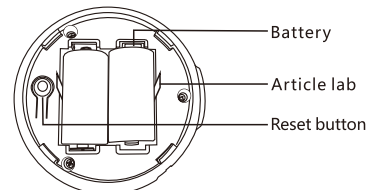
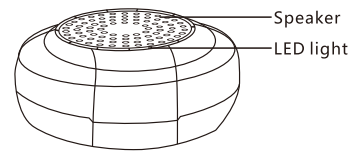


## Product features

### iDoorbell features



### Door Chime Features



1

## Product specification

### Doorbell specification

WiFi: 802.11b/g/n

Audio: full duplex two way audio

Resolution: 720P

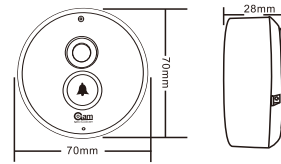
View angel: 120 degree

TF card: 8GB

Power: DC5V 2A

Operate temperature:-10F ~120F

Dimension: 2.7" (D) X 1.2" (W)



### Loudspeaker specification

Power: CR123A X 2

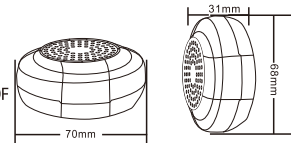
Battery life: 12 months

Continuous work: 1400 times

Operate temperature: -10F ~120F

Sound intensity: 120dB

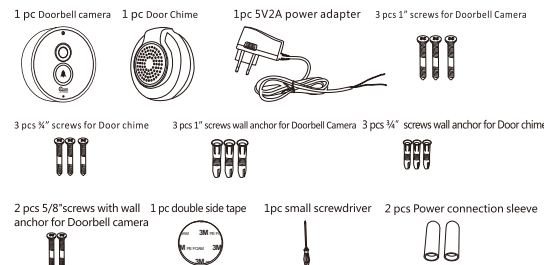
Dimension: 2.7" (D) X 1.2" (W)



## For the first time use and installation

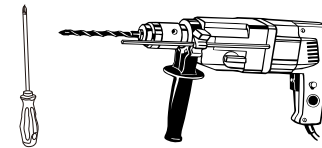
Note: Ensure that there is WiFi network for the doorbell to connect.

### Accessories



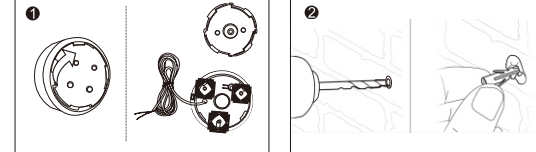
2

You may need: electric drill and a screwdriver

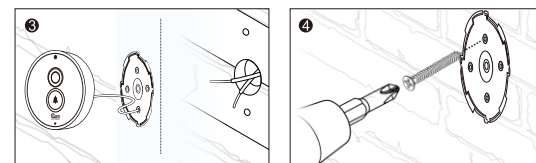


### One : iDoorbell Camera installation steps

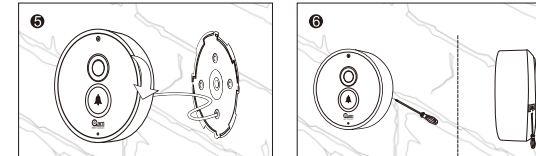
1. Remove the idoorbell camera back cover
2. Drill hole to run iDoorbell power wire



3. Run iDoorbell power wire through the hole
4. Mount the back plate using 3X1" screws (use 1" screw wall anchors if needed)

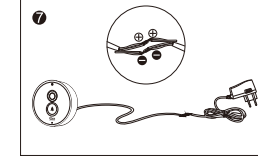


5. Mount iDoorbell camera to the camera backplate
6. Fix iDoorbell camera to the back plate using metal screw

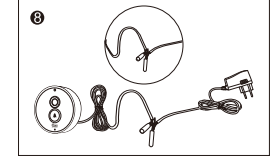


3

7.Connect iDoorbell power line's positive(red) line to Power adapter power line's positive(red) line. Connect iDoorbell power line's Negative(black) line to Power adapter power line's negative(black) line



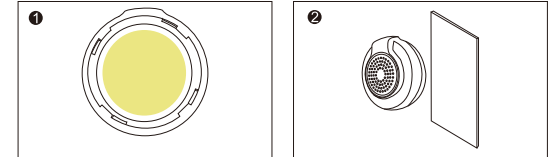
8. Fasten each connected using the power connection sleeve



### Two: iDoorbell door chime installation steps

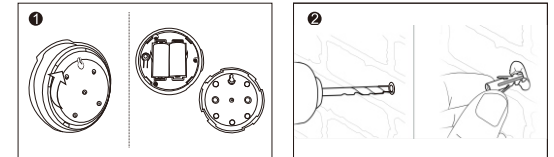
#### Method 1: Paste method

1. Stick the double sided tape to the back of the chime
2. Stick it to the wall

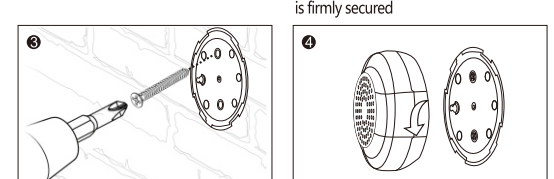


#### Method 2: Mounting method

1. Remove the back cover of the chime
2. Drill holes to insert 3/4" screw wall anchors(if needed)



3. Mount the back plate using 3X3/4" screws
4. Mount Door chime to the back cover Make sure to turn clockwise until the chime is firmly secured



4

## App download & Add device

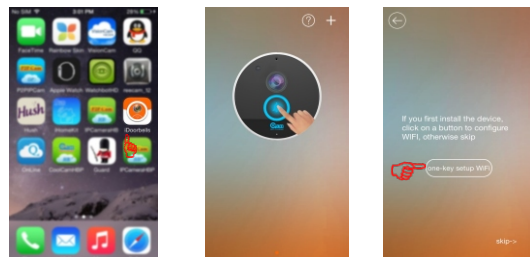
### App download

- 1: Scan the QR code on package to download
- 2: Android phone: download "iDoorbell" from GooglePlay. iOS phone, download "iDoorbell" from App Store

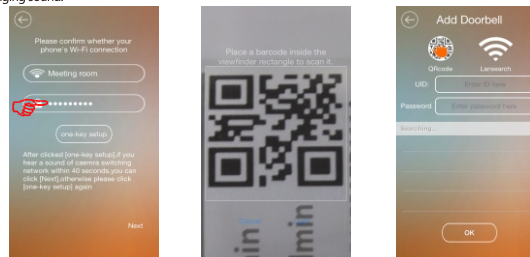
### Add device

#### One.Add iDoorbell Camera

- 1.Run "iDoorbell" from Google Play (first time) or from your phone desktop
- 2.Tap on "+" icon on top right corner to add iDoorbell camera
- 3.For first time installation, tap on "one key setup wifi" icon or choose skip(only if camera wifi setup is done.)



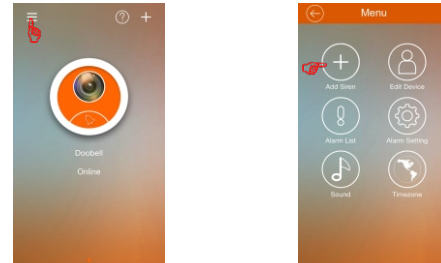
4. While iDoorbell gives ringing sound, choose WiFi router from the list which you want to connect the iDoorbell camera to. Then, input Wi-Fi password and tap on "one key setup wifi". Normally it takes about 40 seconds for iDoorbell camera to connect to your Wi-Fi router. When it is done, you will hear a short burst of ringing sound.
5. Add iDoorbell to your app by scanning QR code on the back of the iDoorbell and input password(default: "admin" )
- 6.Add by Lansearch(select from the Doorbell List) and input password(default: "admin" )



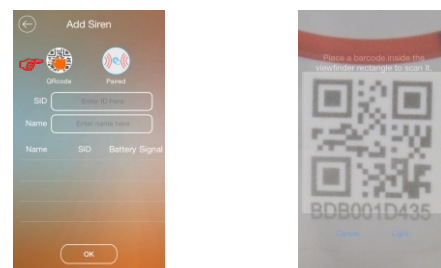
5

### Two: Add iDoorbell Door Chime

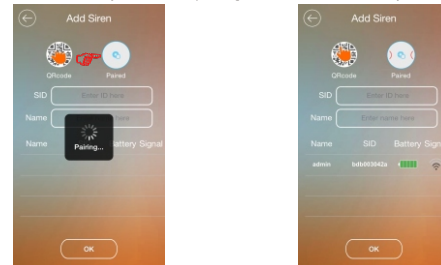
- 1.Tap on setup menu on top left corner
2. Tap on add siren button "+"



3. Add door chime by scanning QR code located on the front of the device. Then name your device.



4. Add door chime by automatic pairing method. Then, name your device



6



## iDoorbell Quick Installation Guide

