

KS-601

Smart Light Switch User Manual



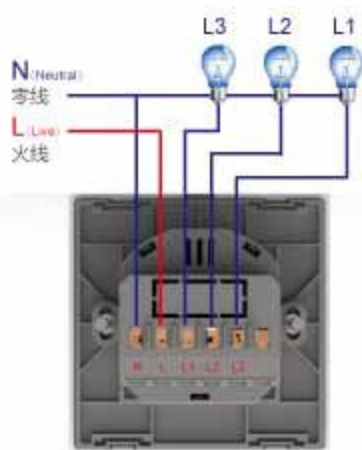
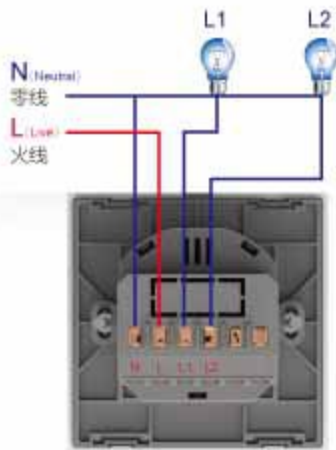
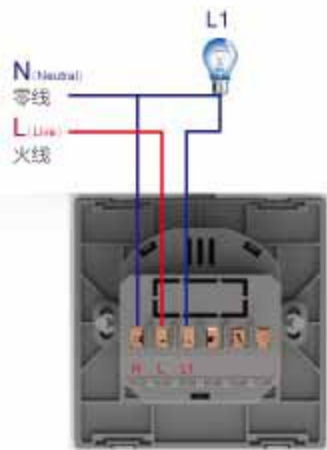
What is the meaning of the light ?



Pilot lamp status :

1. Wi-Fi status LED flash quickly:
Switch is configuration model.
2. Wi-Fi status LED stay lit:
Switch is with through connected the network .
3. Lamp status LED is blue:
Smart Switch power OFF
4. Lamp status LED is extinguished:
Smart Switch power ON

Smart Wall Switch Wiring Guide



How to download APP ?

- 1、 Scan below QR code or scan QR code on the box name: Wisen
IOS system please download from APP store name: Wisen
Android download from Google play name :Wisen



Android & IOS System

How to register ?



LOGIN

REGISTER

Forgot Password



Click here to register



Email/Phone number Register

18688706492

Verification Code

Password

1234567890

Enter a Telephone number ,
Verification Code and Pass
word



Email/Phone number Register

18688706492

Verification Code

Enter the captcha code
get a verification SMS
TNNC

CANCEL SURE

Send Code and Enter a password



Email/Phone number Register

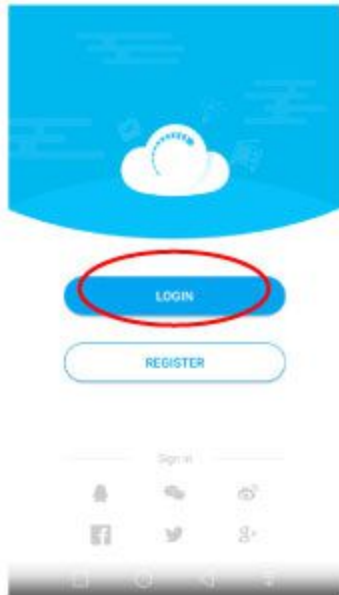
18680663762

5555

REGISTER

I have read and accept the [Terms User Agreement](#)

How to Login ?



How to add and search device ?



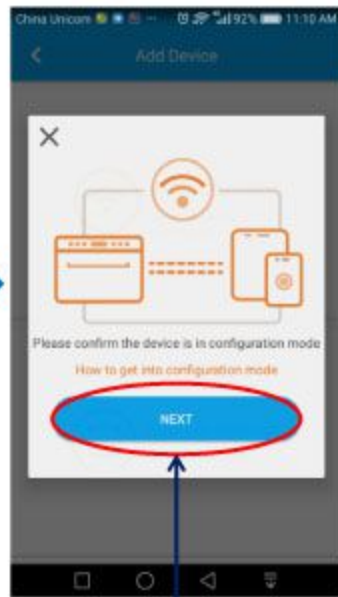
1、 Touch WIFI button 5 seconds, waiting for WIFI button light flash quickly, it means being connecting .If the Light not flash quickly ,please repeat again.



2、 Click the“+” button

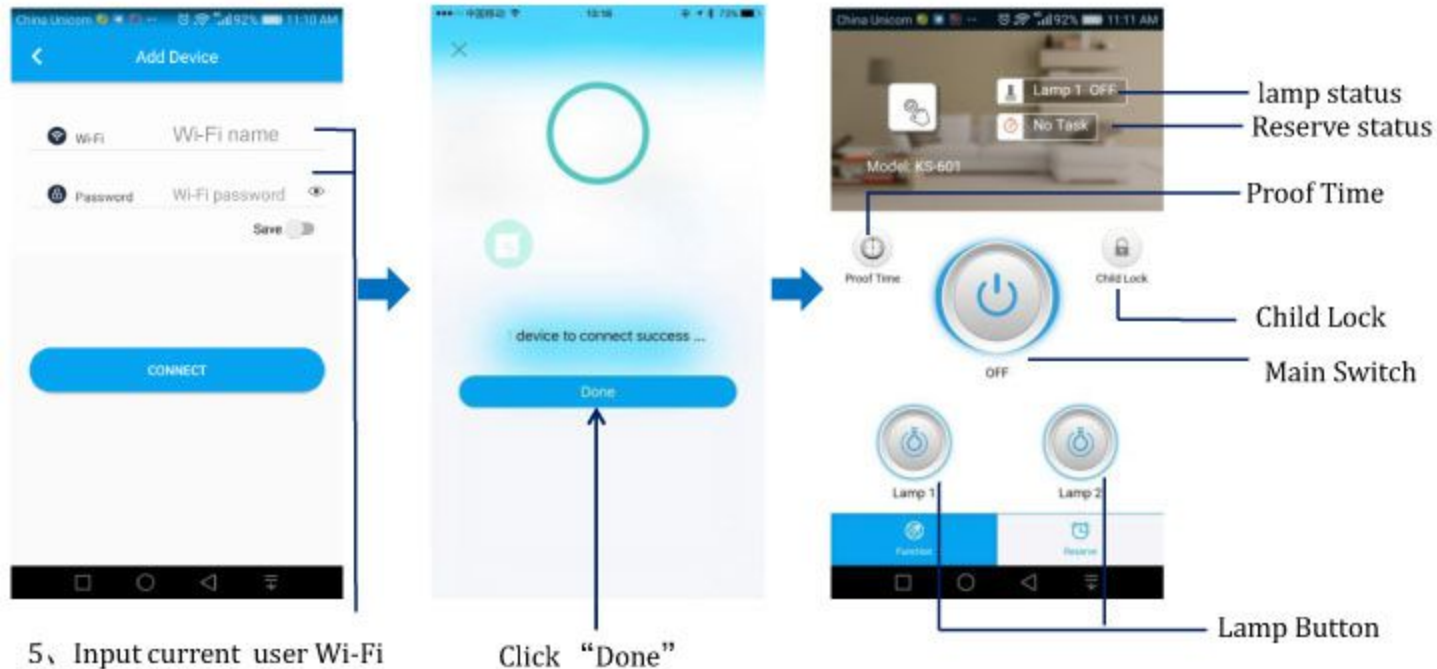


3、 Check here



4、 “please confirm the device is in configuration mode” if right, please check “NEXT”

How to add and search device ?



5、Input current user Wi-Fi Name and Password

Click "Done"

Lamp Button

Main control interface



Reserve setting



lamp status

Reserve status

Proof Time

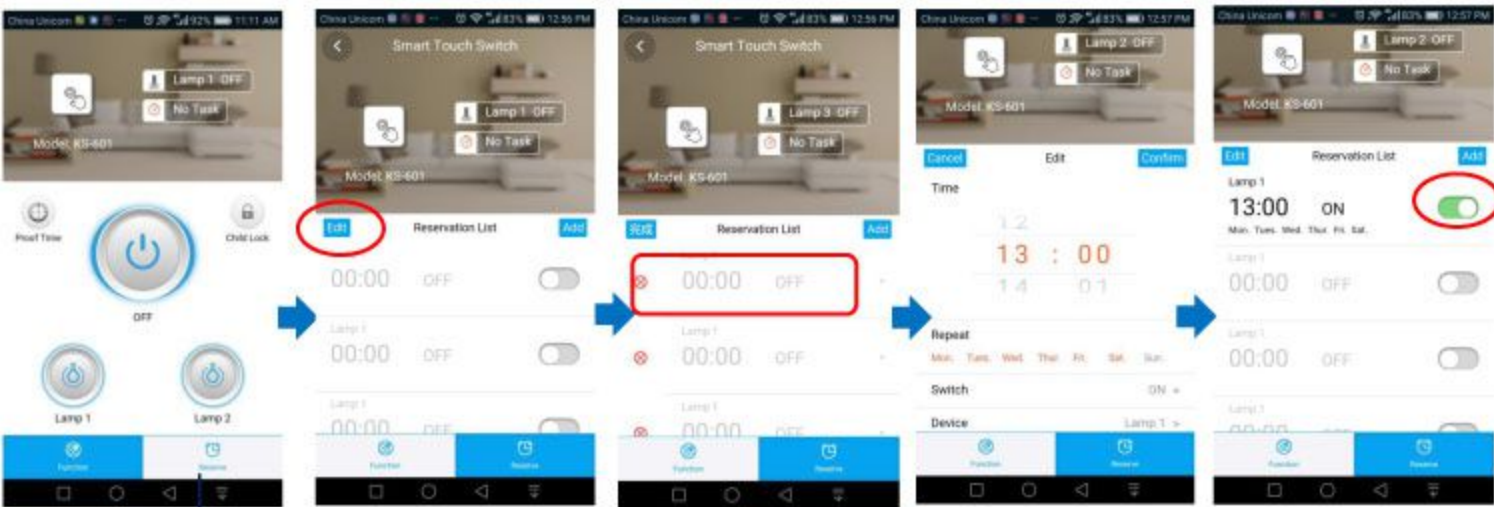
Child Lock

Main Switch
"OFF"

Lamp "OFF"

How to Reserve setting?

You can set up to 10 sets of timing tasks and according with different requirements to control the lamp switching time.



Reserve setting

Edit reserve

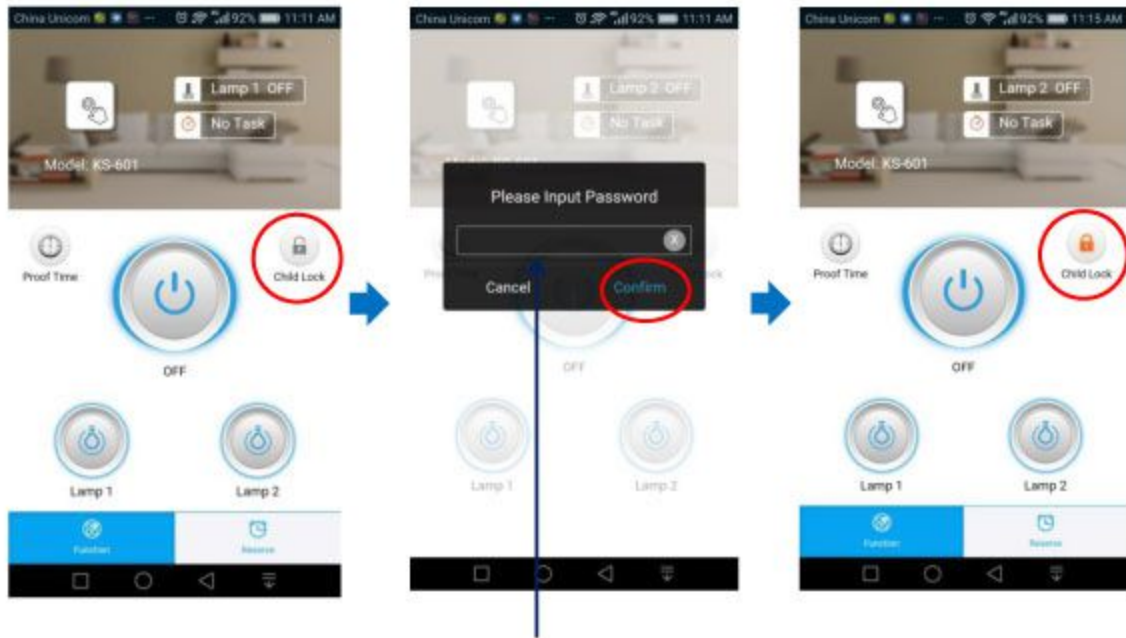
Edit reserve

Edit reserve

Set successes

How to setting Child lock?

This function can prevent children operation



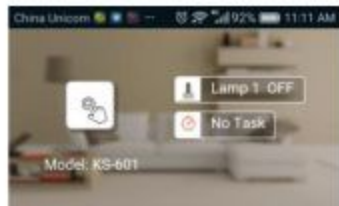
Chick "Child lock" button

Input password "888"

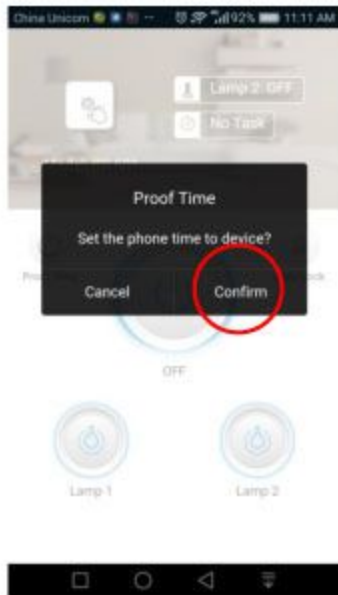
Set successes
Remove step as set

How to setting Proof Time?

You can always calibrate the time between APP time and mobile phone error , let the APP operation and Wi-Fi switch be synchronized.



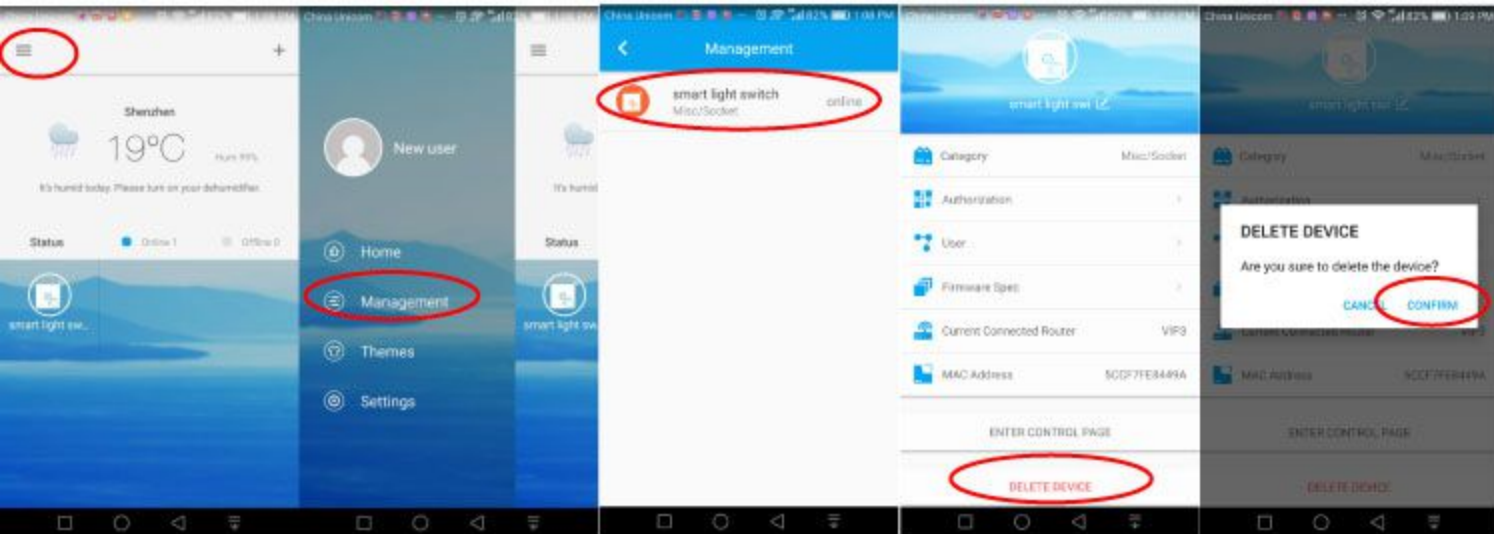
Chick "Proof Time" button



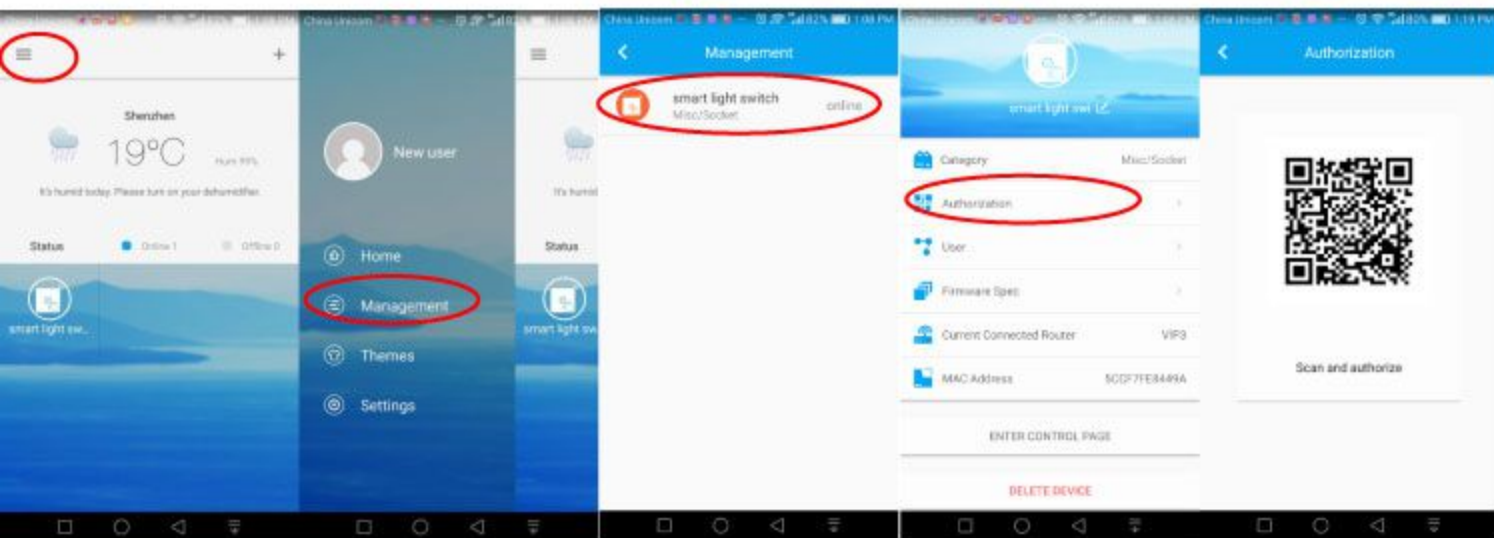
Chick confirm

Note: use reserve for the first time, please perform the proof time when first

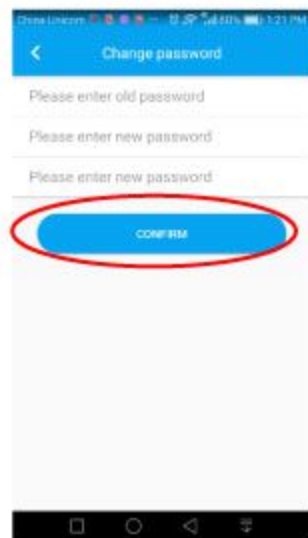
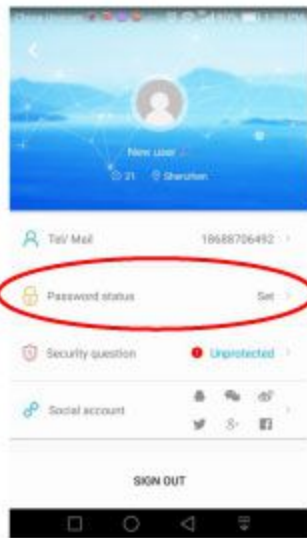
How to Delete device?



How to Share device?



How to Modify password?



How to Modify the lamp name?



Click "Lamp 1"



Enter new name



Set successes